




Buckmaster Way, Brereton, Rugeley, WS15 1FQ

£290,000

 3  2  1

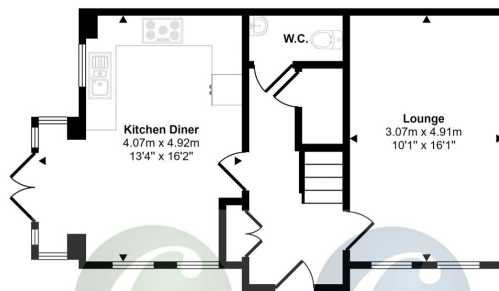


**** ONLINE VIRTUAL TOUR AVAILABLE ON THIS PROPERTY - why not take a peek before booking a viewing**** C residential are pleased to market this well presented semi-detached modern family home on popular residential development. UPVC double-glazed and Gas centrally heated. Entrance Hall, Guest Cloakroom, Lounge and Dining Kitchen. First Floor Landing with Three Bedrooms, En-suite Shower Room and Family Bathroom. GARAGE TO REAR. Gardens to front and side. EPC rating C

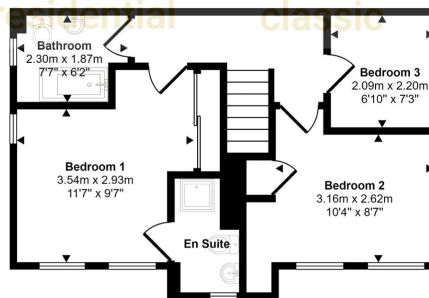
Key Features

- POPULAR LOCATION
- UPVC DOUBLE-GLAZED
- GAS CENTRALLY HEATED
- WELL PRESENTED THROUGHOUT
-
-
-

Approx Gross Internal Area
87 sq m / 941 sq ft



Ground Floor
Approx 44 sq m / 477 sq ft



First Floor
Approx 43 sq m / 463 sq ft

This floorplan is only for illustrative purposes and is not to scale. Measurements of rooms, doors, windows, and any items are approximate and no responsibility is taken for any error, omission or mis-statement. Icons of items such as bathroom suites are representations only and may not look like the real items. Made with Made Snappy 360.